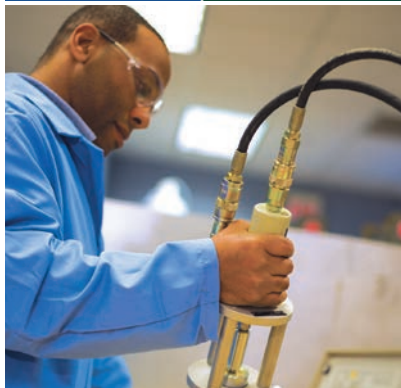
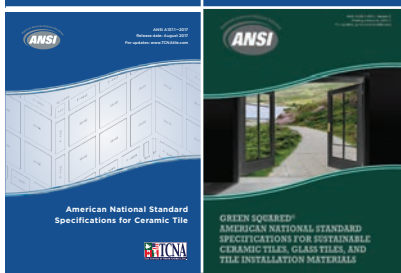
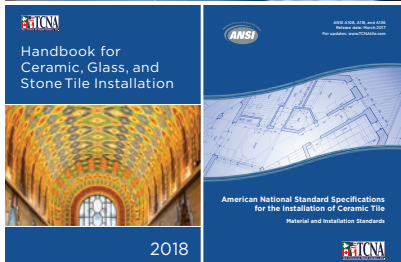


# TCNA TILE INITIATIVE



2018



# STANDARDS. SCIENCE. EDUCATION. ADVOCACY.



## Standards

Leading Association for National and International Consumer-Relevant Quality Standards for Tile, Installation Materials, and Sustainability

Secretariat of ANSI Accredited Standards Committee A108 and ISO Technical Committee 189

Editor and Publisher of the *TCNA Handbook for Ceramic, Glass, and Stone Tile Installation*

## Science

Largest Independent Tile and Installation Materials Testing Laboratory in North America

Leading Research Partner in the Development of Standards

## Education

Founding Partner in Installer Education and Certification Programs in the United States and Mexico

Publisher of *TCNA Tile Initiative* and *Tile: The Natural Choice*

Publisher of Quarterly Tile Industry Market Reports

Author of Safety, Quality, and Standards-Related Articles

Staff Regularly Serve as Keynote and Industry Speakers

## Advocacy

Consumer and Industry Interests in Legislative, Regulatory, and Environmental Matters

**Tile Council of North America**  
100 Clemson Research Blvd. Anderson, SC 29625  
864.646.8453 ♦ [www.TCNAtile.com](http://www.TCNAtile.com)

- 2** TCNA Bulletin  
**ANSI A326.3 Unifies Measurement of Slip Resistance for Hard Surfaces**
- 12** TCNA Bulletin  
**Critical Changes to HS and HTS Codes for Ceramic Tile Imported into the United States**
- 20** Porcelain Tile Certification and The Porcelain Tile Certification Agency (PTCA)
- 24** TCNA Bulletin  
**What Is True Porcelain?**
- 26** **When Quality Is the Bottom Line: Match ACT-Certified Installers to the Job at Hand**
- 28** TCNA Bulletin  
**Choosing Your Tile Contractor**
- 32** Special Section from Tile Heritage Foundation  
**Tile Heritage Foundation: Guardian of American Tile History**
- 46** 2018 Ceramic Tile Education Foundation (CTEF) Sponsors

## ABOUT THE ADVERTISERS

The advertisements in this issue come from the Elite, Signature, and Platinum level sponsors of the Ceramic Tile Education Foundation (CTEF). Their generous donations enable the administration and growth of CTEF's educational and certification programs for tile installers and other tile industry professionals. These programs benefit the construction industry and tile-consuming public by facilitating a higher level of craftsmanship in tile installation and a means of identifying qualified installers in the trade. For more information, visit [www.tilecareer.org](http://www.tilecareer.org). All of the funds received go directly to CTEF with the cost of printing donated by the Tile Council of North America (TCNA), publisher of the *TCNA Handbook*.

# TCNA BULLETIN

## ANSI A326.3 UNIFIES MEASUREMENT OF SLIP RESISTANCE FOR HARD SURFACES

*A new standard for DCOF, ANSI A326.3, unifies the measurement of slip resistance for hard surface flooring materials!*

Since 2012, the DCOF AcuTest® has been the ceramic tile industry standard for testing dynamic coefficient of friction (DCOF). Contained in section 9.6 of ANSI A137.1, the American National Standard Specifications for Ceramic Tile, the DCOF AcuTest® is the method used by the tile industry for assessing a floors relative “slipperiness”, whether in-situ after installation or during manufacturing. Although initially developed for ceramic tile floors, the methodology was equally applicable and useful with other hard surface flooring, where its use has been “gaining traction” every year.

With facility managers, inspectors, cleaning professionals, and forensic engineers using the method increasingly in the field, ANSI A326.3, Test Method for Dynamic Coefficient of Friction of Hard Surface Flooring Materials, was developed based on the DCOF AcuTest®.



Approved in March 2017 by a broad consensus of hard surface flooring stakeholders, ANSI A326.3<sup>1</sup> incorporates the well-known method in ANSI A137.1 into a separate, stand-alone DCOF standard for hard surface flooring materials. Also, a new field testing section was added to provide guidance when testing in-situ. The standard includes testing an installed floor under prevailing conditions, as would be the case when evaluating cleaning/maintenance procedures. Additionally, the field testing section addresses testing after cleaning, including the use of other, stronger cleaning agents in comparison to the cleaner referenced in the laboratory method. This evaluation is useful for testing the flooring surface itself after install and use, without contaminants, to check for wear and to compare to the manufacturer’s reported DCOF.

<sup>1</sup> As a simple mnemonic, 326.3 spells “DCOF” on a touchtone phone

### Additional Guidance for the Specifier

The ANSI A137.1 specification released in 2012 included a minimum threshold of 0.42 for tiles intended to be walked upon when wet with water, and guidance to the specifier about important factors relevant to slip resistance. ANSI A326.3 has the same specification but additionally provides further guidance helpful for the specifier. Examples of the additional guidance given in A326.3 include the following:

- While specifying products with higher COF for use under contaminated conditions can be considered, higher COF can lead to maintenance/cleanliness issues and hard to remove contaminants and films, which can cause hazardous and unfavorable conditions. In addition to maintenance issues, a surface with a high COF can create a difficult walking condition for that subset of the elderly and disabled who slide their feet on the floor. For them, smooth and dry flooring is needed, specifically flooring with a low wet COF that is kept dry when in use.



- Hard surface flooring materials with a wet DCOF less than 0.42 are often used in areas such as shopping malls (outside the food court), hotel lobbies, office buildings, etc. where appearance and ease of cleaning are highly desired and measures are in place to keep the floor dry when walked upon.
- Hard surface flooring materials which have a coating applied shall only be used in areas that can be kept dry, unless otherwise specified by the coating's manufacturer. If testing data is required after a coating is applied, use the test method specified by the manufacturer, or the dry testing procedure in this standard if no test method is suggested by the manufacturer of the coating.

The new standard identifies many factors that must be taken into account when determining the suitability of a hard surface flooring material for a particular application. For example, in exterior applications, the suitability of a flooring material depends significantly on drainage of the assembly, physical structure of the flooring material, expected footwear, intended use, and the variety of contaminants present, among many

# TCNA BULLETIN

## ANSI A326.3 UNIFIES MEASUREMENT OF SLIP RESISTANCE FOR HARD SURFACES

other factors. This is why a single DCOF limit value is not provided for exterior applications, interior ramps/ inclines, and areas expected to be contaminated with something other than water.

### Putting the Standard into Practice

Tile manufacturers already report DCOF according to A137.1/A326.3, with some including the information directly on their cartons and others providing the information in their product literature. While the ANSI specification for ceramic tile does not require a minimum or maximum DCOF value independent of how the tile is used, reporting the value per the DCOF AcuTest® is required. Other hard surface flooring industries are similarly following suit, with the Marble Institute of America specifying a similar 0.42 DCOF value for stone flooring intended to be walked on when wet.

However, it is important to understand that DCOF is only one factor in determining the suitability of a flooring material for a particular application. As the standard correctly notes, there are many factors that can affect the possibility of a slip occurring, including by way of example, but not in limitation, the following: the material of the shoe sole and the degree of its wear; the presence and nature of surface contaminants; the speed and length of stride at the time of a slip; the physical and mental condition of the individual at the time of a slip; whether the floor is flat or inclined; how the hard surface flooring material is used and maintained; and the COF of the material, how the flooring surface is structured, and how drainage takes place if liquids are involved. To specify flooring materials appropriately requires knowledge of how the space will be used and maintained; often the better the communication regarding this early on, the better the flooring selections.





Considering slip resistance is especially important at entrances and exits where flooring can become unintentionally contaminated, either from water and soil tracked inside, or from fire-fighting efforts under emergency conditions. All building chokepoints deserve extra attention, as well as spots where water and other liquids can be anticipated, such as by drinking fountains, inside and around restrooms and kitchens, etc. Also, areas where the floor may be worn or polished deserve attention and periodic monitoring. Remedial treatments are always possible when DCOF monitoring indicates the need for such.

More than anything, the easy measurement of in-situ flooring through the DCOF AcuTest® finally allows building owners/facility managers a means to monitor their spaces for essential flooring safety. Such monitoring, sometimes called DCOF auditing, can be used to keep maintenance providers accountable; after all, if a floor is not maintaining its intended DCOF value under actual use conditions, an accident can be anticipated. When floors are properly specified and maintained, safer walkways result, benefitting all.

As a public service, the Tile Council of North America, publisher of the A326.3 standard, offers the standard without charge on the TCNA website.



“Gauged porcelain tiles and gauged porcelain tile panels/slabs differ from traditional ceramic tiles in their physical characteristics and performance. ... In addition to having a unique product standard (A137.3), gauged porcelain tiles and gauged porcelain tile panels/slabs require unique installation procedures and workmanship standards.”

— *ANSI A137.3—2017 and A118.19—2017: American National Standard Specifications for Gauged Porcelain Tiles and Gauged Porcelain Tile Panels/Slabs*



# Gauged Tile.

## It's a Little Different.



Set your project up  
for success.

Visit [TCNAtile.com](http://TCNAtile.com)  
for a copy of the new  
standards for gauged  
porcelain tile, now  
available in print and  
digital formats.



## Know Your Number.

Whether you're manufacturing, specifying, selling, installing, or maintaining hard surface flooring, it's important to know the Coefficient of Friction (COF) of your chosen material according to ANSI A326.3, the American National Standard Test Method for Measuring Dynamic Coefficient of Friction of Hard Surface Flooring Materials. Our lab not only performs the ANSI A326.3 test, we helped develop the protocol.

Be sure you're meeting this very important safety standard. Call TCNA today for ANSI A326.3 testing.



Product Performance Testing Laboratory

864-646-8453 • [www.TCNAtile.com](http://www.TCNAtile.com)

CB@tcnatile.com (English, Español, Italiano, Português)



# Coverings is Committed to Tile Industry Education

## What is the Ceramic Tile Education Foundation?

The Ceramic Tile Education Foundation (CTEF) provides education and installer certification for professionals working in the ceramic tile and stone industry.

Find out more about Coverings and register for free at [coverings.com](http://coverings.com)

To learn more about CTEF, visit [ceramictilefoundation.org](http://ceramictilefoundation.org)

## Coverings has a long history of supporting the tile industry and championing continuing education, tile installation training, and certification.

For the last decade, Coverings has provided more than \$1 million in support of education and certification to CTEF and has served as an annual testing site for the CTI and ACT programs. This year, Coverings will debut The Installation Experience on the show floor. This

interactive area will feature installation best practices including innovations in thin tile and tile over tile along with information about certification. Coverings also hosts the Installation Design Showcase, where tile installers bring to life cutting edge architecture and design concepts in tile.



# Coverings'18

THE GLOBAL TILE & STONE EXPERIENCE

Proud sponsor of the Ceramic Tile Education Foundation



**We've escalated the possibilities.  
You take the credit.**

**Now, big, beautiful tile has the strength to elevate a space – and you.** With Bosti-Set™ adhesive, Bostik's latest innovation, today's thin porcelain tile panels can be installed quickly and safely with precision—all while enhancing the acoustic performance of the wall and its overall long-term durability. Installation **materials weigh up to 80% less** and are **installed in half the time** with half the crew required for traditional methods. You can count on Bosti-Set™ to speed up the installation of your thin porcelain tile panel project. We stick beneath the surface. We offer support. **You take the credit.**

Visit [bostik.com/bosti-set](http://bostik.com/bosti-set) for videos and sound testing data.

Proud Supporter of the Ceramic Tile Education Foundation

T3063\_05.22.17



## Even better than the real thing

With looks as good as natural stone, Cava brings you all of the style with unsurpassable performance.

Order a complimentary sample and learn more at [CrossvilleInc.com/Laminam](http://CrossvilleInc.com/Laminam)



Proud Sponsor of the Ceramic Tile Education Foundation





# THREE POWERHOUSE BRANDS. ONE EXTRAORDINARY FAMILY.



**DELIVERING THE EXCEPTIONAL SERVICE YOU DEPEND ON.** With styles for every project and every space, Daltile, Marazzi and American Olean offer the industry's most fashion-forward styles and designs. Together, these brands provide the experience, products, knowledge and support you need to exceed your expectations.



## CRITICAL CHANGES TO HS AND HTS CODES FOR CERAMIC TILE IMPORTED INTO THE UNITED STATES

Ceramic tile imported into the United States is tariffed, or subject to duty, per the Harmonized Tariff Schedule (HTS) maintained by the United States International Trade Commission (USITC). This schedule provides the applicable tariff rates and statistical categories for all products imported into the United States. For ceramic tile, the HTS classifies tiles based on their water absorption, except for mosaics and finishing pieces, which are classified separately. In each category, further classification is made based on whether the tiles are glazed or unglazed, and according to certain size criteria.

Critical changes to the HTS took effect January 1, 2017 which impact all companies that import ceramic tile into the United States. These changes follow a 2014 decision of the World Customs Organization's (WCO's) Harmonized System Committee, with three years scheduled for implementation. Harmonized System (HS) codes,

which are developed and administered by the WCO, are used in nearly two hundred countries by customs officials to classify and track globally traded products.

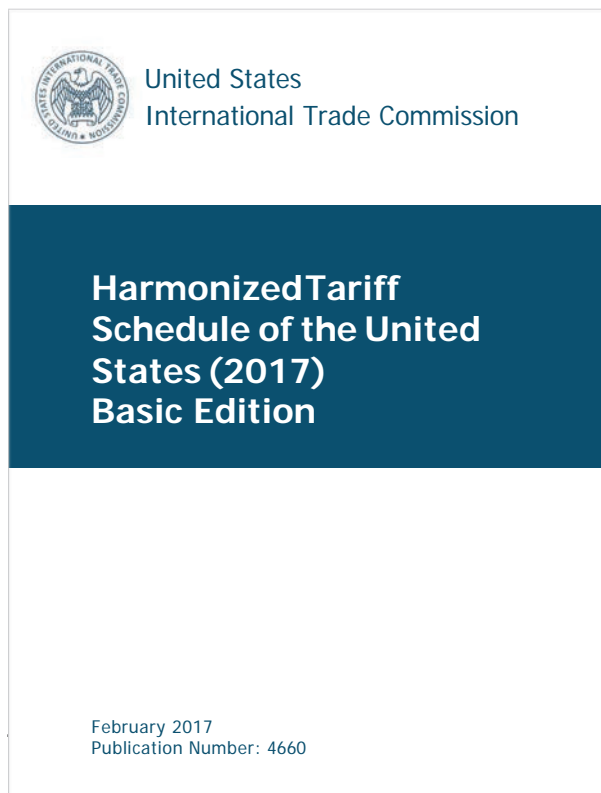
### **What Has Changed?**

Worldwide, as of January 1, 2017, ceramic tile must be classified under HS heading 6907 as described below. Prior to this change, HS heading 6907 was used for unglazed tile, and HS heading 6908 was used for glazed tile. Under these two headings, tiles were subcategorized based on size—specifically, whether the tile was a mosaic, larger than a mosaic but smaller than a 12" x 12" tile, or larger than 12" x 12".<sup>1</sup>

The 6908 heading is now no longer in use, and at the six-digit, international level the revised 6907 heading classifies tiles as follows:

- 6907.21 Of a water absorption coefficient by weight not exceeding 0.5%
- 6907.22 Of a water absorption coefficient by weight exceeding 0.5% but not exceeding 10%
- 6907.23 Of a water absorption coefficient by weight exceeding 10%
- 6907.30 Mosaic cubes and the like, other than those of subheading 6907.40
- 6907.40 Finishing ceramics

At the national level, four additional digits are allowed (i.e., ten-digit headings) for further subdivision of the categories above.



---

1 For glazed tiles, there was also further subcategorization of the mosaic category.

### ***What Are Mosaic Tiles, and Why Are They Categorized Separately?***

This seemingly straightforward question is surprisingly complex. At present, the term “mosaic” is not defined by the WCO or U.S. Customs and Border Protection (CBP). Historically in HS headings, mosaic tiles were specifically defined by size requirements and limited to all tiles less than 49 cm<sup>2</sup>. While the new heading 6907.30 does not contain size requirements, presumably CBP will interpret the category in the same fashion.

No distinction is made at the six-digit level in category 6907.30 based on water absorption or whether the tiles are glazed or unglazed. As the quantity of mosaics moving between countries is small, and as the properties for such tiles are not internationally defined in the International Standards Organization’s (ISO’s) ceramic tile standard (13006), mosaics will be tracked separately from tiles in categories 6907.21–6907.23, in which water absorption determines the classification.



### ***What Are Finishing Ceramics, and Why Are They Categorized Separately?***

Finishing ceramics are classified in the explanatory notes to HS heading 6907 as follows:

Bordering, capping, skirting, frieze, angle, corner or other fitting tile pieces employed as complementary elements for finishing off the facing, paving, etc., work, with or without rounded edges, non flat or three-dimensional, which give them the character of finishing pieces; that would be the case, in particular, for bordering, skirting, frieze, corner pieces, decorative inserts and other ceramic accessories. In these cases, these pieces need to match with the other basic tiles, so their proper surface usually has the same shade or finish of the normal tiles. They are generally sold by piece or by linear metre.

These tiles sell at a volume and price very different from the field tiles they complement. As such, greater clarity is achieved in all categories by tracking finishing ceramics separately from field tiles. As with mosaics, finishing ceramics are not distinguished at the six-digit level by their water absorption or whether they are glazed or unglazed.



## CRITICAL CHANGES TO HS AND HTS CODES FOR CERAMIC TILE IMPORTED INTO THE UNITED STATES

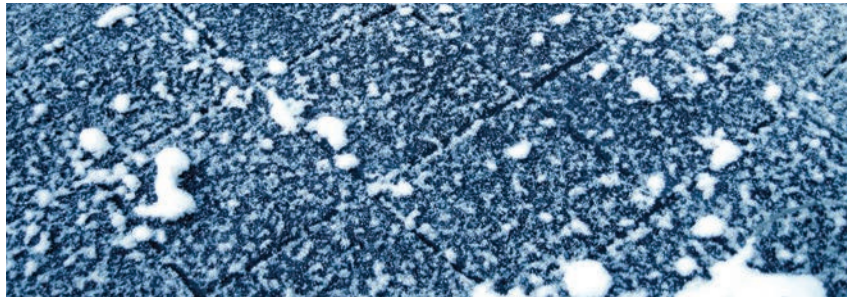
### ***How Is Water Absorption Determined?***

A tile's water absorption, or the percentage of weight it gains when water soaks into its body, is indicative of its overall connected porosity. The more water weight a tile gains, the more porous it is.

In the United States, a tile's water absorption is determined using the ASTM C373 standardized test method, which requires the use of a strong vacuum to draw water into a tile's pores. This procedure, updated in 2016 from a previous version which required a 5-hour boil and 24-hour water soak, allows for tile saturation in a much shorter timeframe than the previous boil method.

Similarly, the ISO 10545-3 water absorption test method, which is used more commonly outside the United States, is being updated in 2017 to align with the new ASTM International C373 vacuum procedure.

Given that ASTM C373 and ISO 10545-3 have historically differed procedurally, this recent effort at harmonization allows for increased consistency in water absorption testing and reporting.



### ***Why Is Water Absorption Important?***

A tile's water absorption directly affects the way it absorbs moisture, initially from the setting material and subsequently from the environment. This can affect the bond that is established where very high or low water absorption can require the use of specific bonding materials or substrate preparation.

Water absorption also affects freeze/thaw resistance, moisture expansion, breaking strength, and resistance to crazing, which can affect whether tiles are suitable for certain applications and how they should be installed. For example tiles that are highly water absorbent may not be suitable for freeze/thaw conditions, as the greater amount of water may cause the tile to crack in freezing weather.

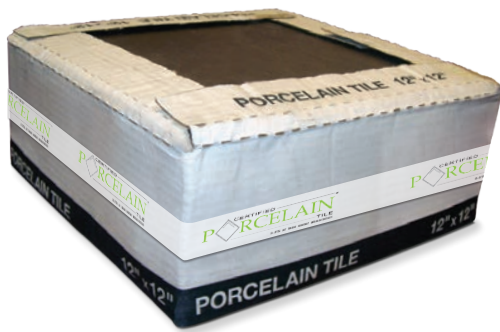
In addition to freeze/thaw concerns, the unintended use of non-porcelain tile when porcelain tile was specified can cause greater than anticipated moisture-related expansion, possibly leading to tiles popping off the floor or wall due to the resulting compression.<sup>2</sup> Greater moisture absorption can also lead to crazing where the impervious glaze develops micro-cracks due to the underlying tile body expanding.

It is also true, but less well known, that a water-saturated tile has a lower breaking strength than a dry tile. This can be problematic if the tiles are exposed to a high level of point loading or are imperfectly installed.

---

<sup>2</sup> As the tiles expand, they put the surrounding tiles in compression.





### **Historic Problem with Water Absorption Reporting and False Porcelain**

Porcelain tile is defined in the U.S. ceramic tile standard, ANSI A137.1, as an impervious tile with water absorption of 0.5% or less, as measured by the ASTM C373 test method.

There is, however, a large body of foreign-made tiles not meeting this standard, many of which have been advertised and sold as porcelain. In part this has occurred due to the use of a less rigorous method internationally for determining water absorption. In other instances, some overseas manufacturers have made deliberate decisions to sell tiles as porcelain regardless of their actual water absorption value. The same has also been true of less than scrupulous importers who have marketed tiles as porcelain while knowing they did not meet the ANSI A137.1 standard.

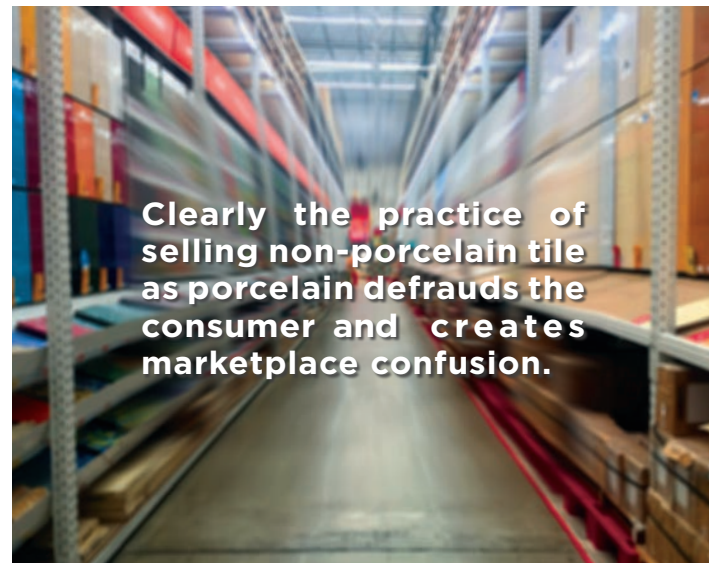
In certain instances these products have been called “residential porcelain,” but as the products didn’t meet porcelain tile criteria, the term misrepresented the true nature of the tiles. Invariably these efforts to sell non-porcelain tile as porcelain were to take advantage of the popularity of the porcelain category, and because producing genuine porcelain is a more costly and higher temperature process than producing non-porcelain ceramic tiles.

Clearly the practice of selling non-porcelain tile as porcelain defrauds the consumer and creates marketplace confusion.

The Porcelain Tile Certification Agency (PTCA) was launched in 2007 to address these issues by providing a way for manufacturers to confirm their products are genuine porcelain. More information on this program can be found at [www.ptcaonline.org](http://www.ptcaonline.org).

### **New HS and HTS Codes and Revenue Neutrality**

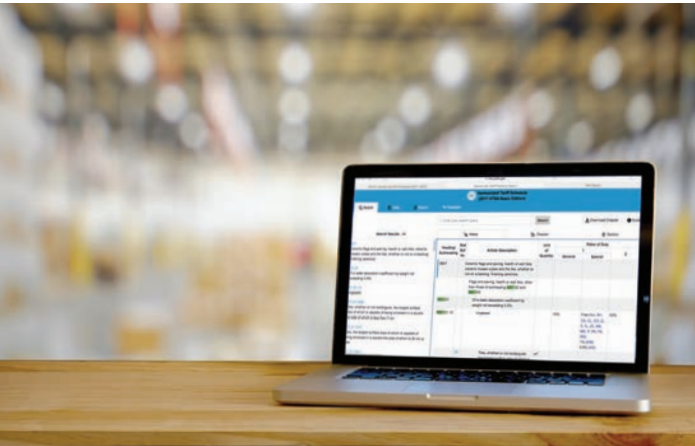
As noted previously, starting January 1, 2017, use of the 6908 heading was discontinued, and the revised 6907 heading classifies all tiles, not otherwise classified as either mosaics or finishing pieces, according to their water absorption.



For tile entering the U.S. market, the USITC further breaks the HS codes down to a ten-digit level (HTS codes) to capture more specific data. These HTS codes differ from HS codes in that they are specifically for imports into, and exports out of, the United States.

HTS codes use the same first six-digits as HS codes, but the last four digits differ. The ten-digit HTS codes for ceramic tile can be found on the USITC website, [hts.usitc.gov](http://hts.usitc.gov).

## CRITICAL CHANGES TO HS AND HTS CODES FOR CERAMIC TILE IMPORTED INTO THE UNITED STATES



The additional four digits are used to keep the new classification revenue neutral with the old classification and to meet the following criteria:

- “The modification must be consistent with the [Harmonized System] Convention or any amendment thereto recommended for adoption, must be consistent with sound nomenclature principles, and must ensure substantial rate neutrality.
- Any change to a rate of duty must be consequent to, or necessitated by, nomenclature modifications that are recommended under this section.
- The modification must not alter existing conditions of competition for the affected United States industry, labor, or trade.”

To maintain revenue neutrality, and to adhere to all existing trade agreements and rates of duty, the new codes must preserve the distinction between glazed and unglazed tiles, with unglazed tiles generally at 10% duty and most glazed tiles at 8.5% duty (excepting if imported from North Korea or Cuba with much higher duties). Similarly, the new codes also preserve the size distinctions in the prior HTS codes.

In total there are 40 separate ten-digit HTS codes for ceramic tile importers and exporters under the new system, compared to the eight in the prior system and the five listed in the new HS system.

As an example, the prior system classified glazed ceramic tiles larger than 30 cm x 30 cm (approximately 12" x 12") under heading 6908.90.00.51.

Under the new system, whether the tile is porcelain, non-porcelain floor tile, or wall tile is relevant; glazed porcelain floor tiles larger than 30 cm x 30 cm are classified under heading 6907.21.90.51, with the duty being the same in the prior system under 6908.90.00.51.

Glazed non-porcelain floor tiles larger than 30 cm x 30 cm are classified under heading 6907.22.90.51, and similar tiles for walls only (i.e., with water absorption over 10%) are classified under heading 6907.23.90.51.

### A Necessary Solution

To comply with the changes from the WCO, as discussed above, USITC had no choice as a matter of law but to recommend the changes to the HTS discussed herein. It is worth clarifying that neither U.S. industry nor U.S. importers can simplify or change the tariff schedule when it affects government revenue; it literally takes an act of Congress to change the tariff system if revenue neutrality is not maintained.

### Overlap in the HTS Codes

Further complicating the new HTS codes, as noted previously, the category 6907.30 for mosaics was created in the HS system by the WCO without defining the term “mosaics.” This category overlaps with the mosaic sizes in the HTS codes starting with 6907.21 through 6907.23.

As an example, the pre-2017 system classified an unglazed mosaic tile under heading 6907.10.00.00 with a duty of 10% (excluding those countries with special duty provisions). Under the new system, depending on its water absorption, an unglazed mosaic tile could meet the criteria of heading 6907.21.10.05 (porcelain tile), heading 6907.22.10.05 (non-porcelain floor tile), or heading 6907.23.10.05 (wall tile), and regardless

of water absorption, heading 6907.30.10.05 (mosaic cubes and the like), and if also a trim tile, heading 6907.40.10.05 (finishing ceramics). All carry the same 10% duty.

Just as the six-digit categories 6907.21 through 6907.23 in the HTS codes contain mosaic sizes, the mosaic category (6907.30) in the HTS codes contains sizes outside the mosaic range, specifically 6907.30.90.11 (30 cm x 30 cm or less) and 6907.30.90.51 (greater than 30 cm x 30 cm).

We fully expect CBP will clarify which categories to use given that some size-based subdivisions within the ten-digit HTS codes conflict with the intent of the 6907.30 category. As a matter of law, CBP is the only agency that can provide legally binding advice or rulings on classification of imports. They should be contacted with any questions about how potential imports would be classified.

### **Impact on the U.S. Market**

While PTCA has been effective as a voluntary path for porcelain tile manufacturers to demonstrate their compliance with porcelain water absorption criteria, it



does not prevent manufacturers that do not participate from false labeling. With the HTS codes in effect as of January 1, 2017 requiring water absorption to be declared, importers will more carefully require that information from their suppliers and more carefully report it. If failing to report it correctly, U.S. CBP can issue fines and potentially hold importers criminally liable for making false declarations. Presumably the risk of such will help reduce the amount of mislabeled tile entering the market.

Given the problems potentially occurring when non-porcelain tiles are unknowingly substituted for porcelain tiles (excessive expansion, loss of freeze/thaw resistance, moisture-related crazing, and reduced breaking strength), greater clarity in reporting water absorption will result in fewer installation failures and greater end-user satisfaction.

With the current worldwide effort to harmonize water absorption testing methods well underway, which should be completed in 2017, and federal laws now in force as described, we fully expect these changes to benefit consumers and help level the playing field for all porcelain producers abiding by accepted water absorption criteria.

That's a win-win for consumers and manufacturers alike!



# Download the CUSTOM Mobile App

Makes jobs easier with fast access to the information you need on a jobsite.

## Features Include:

- Product information
- Grout color selector
- Technical data sheets
- Where to buy
- Safety data sheets
- Video library
- Material calculator
- Quick access to technical support

Search for "CUSTOM BUILDING PRODUCTS" in your app store.



Count on CUSTOM for all your tile installation needs. Surface preparation, waterproofing, crack isolation, self-leveling underlayments, patching, priming, thin-set mortars, adhesives, grout, care and tools.

**SUPERIOR**BILT  
**AQUA MIX**

CustomBuildingProducts.com  
Customer Service 800-272-8786 | Technical Services 800-282-8786



Proud sponsor of the Ceramic Tile Education Foundation



## BUILD YOUR LEGACY

Bringing the world beautiful tile and stone projects that stand the test of time. Learn more at [daltile.com](http://daltile.com)



Proud sponsor of the Ceramic Tile Education Foundation

Photo features Ironcraft™ Casper Grey 12 x 24, Woodbridge™ Spruce 4 x 28 on the floor and Brickwork™ Terrace 4 x 8 on the wall.



# Renew Without Replacing

**THINNER**  
SLIM • LIGHTWEIGHT • PORCELAIN

**Time 2.0**

BY

**floridatile**

Proud sponsor of the Ceramic Tile Education Foundation (CTEF).

## EVOLUTION

An Italian tile **made in the USA**

Bringing a brighter and bolder color pallet to what was once uniform, Evolution is the perfect word to describe this amazing product. Evolution comes in four beautiful colors: white, avio, light gray and dark gray. Evolution is the gradual change of something from a simple to a more complex form. The crisp veining and bold shading of Evolution is the perfect example of how digital technology has revolutionized the tile industry; bringing clarity to what was once a blur. If you are looking for something chic and classy, Evolution is the right choice.

**FLORIM USA, INC**  
300 International Blvd.  
Clarksville, TN 37040  
1-877-356-7461  
[www.milestonetiles.com](http://www.milestonetiles.com)

Proud sponsor of the Ceramic Tile Education Foundation (CTEF).



**MI ESTONE**  
Italian tile Made in the USA

# PORCELAIN TILE CERTIFICATION AND THE PORCELAIN TILE CERTIFICATION AGENCY (PTCA)

In 2007 Tile Council of North America (TCNA) partnered with the Ceramic Tile Distributors Association (CTDA) to create the Porcelain Tile Certification Agency (PTCA) to certify porcelain tile. This program was formed at the initiative of distributors and manufacturers who were concerned with the amount of tile being sold in the United States that was marked as porcelain but which was in fact not porcelain.

## ***What is porcelain tile, and why does it matter whether a tile is porcelain?***

As defined by the ANSI A137.1 ceramic tile standard, porcelain tile is a ceramic tile with a very low water absorption (0.5% or less), as tested per ASTM C373. Porcelain tile is denser and has a lower water absorption than other types of ceramic tile. When non-porcelain tiles are unknowingly substituted, freeze/thaw and expansion failures can result from unexpected moisture absorption.

## ***Why was this porcelain tile certification program created?***

It is well known that some non-porcelain tiles made

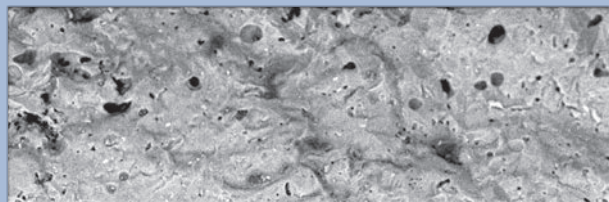


overseas are knowingly mislabeled as porcelain, with exporters and importers choosing to ignore the relevant North American standard (ANSI A137.1). While the criteria for porcelain tiles have been well-defined for several decades in North America, this practice of mislabeling tiles began when the term porcelain was undefined in international standards.

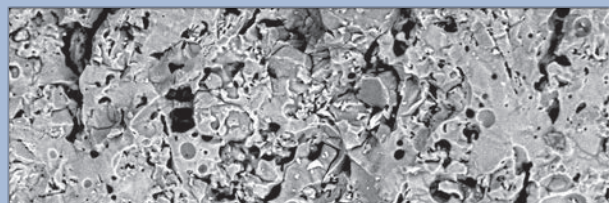
Today the term is well defined, but historically the method used internationally for measuring water absorption was less rigorous than the ASTM C373 method used in North America. Efforts are underway internationally to harmonize the ISO and ASTM methods; how this plays out in the U.S. marketplace remains to be seen.




## **0.39% water absorption**



## **5-6% water absorption**





**Approximately 70% of the tiles sold in the United States are imported.**

Simply stated, this means that some tiles classified as porcelain overseas haven't met the stricter and more demanding water absorption criteria used in North America. In freeze/thaw and wet environments, that can be important. Given that approximately 70% of the tiles sold in the United States are imported, PTCA certification was developed to protect the consumer from tiles either intentionally mislabeled or mislabeled due to differences in testing.

Through the PTCA program the need for porcelain certification has become even more evident, as 341 tile series out of 1,544 (22%) failed as of third quarter 2017.

***Can only manufacturers sign up for PTCA certification?***

No. The program is open to both manufacturers and sellers of porcelain tiles. Either can be a program participant.

***PTCA certification: What does it mean?***

Recognizing that the extent of this false labeling issue only applies to whether or not tiles meet the

water absorption criteria of the ANSI A137.1 standard, PTCA certification was developed only to independently evaluate if the program participant understands North American water absorption criteria and can meet such. Tiles are not checked to see whether or not they meet all the other relevant properties for porcelain tiles in the ANSI A137.1 standard; variance from those properties has not been an issue in general, and the criteria are well understood. For each series being evaluated, five commercially available samples (selected by the participant) are sent once every three years by manufacturing participants and annually by non-manufacturing participants.

Passing the initial testing establishes that the participant understands and can meet North American water absorption criteria. For more details on the PTCA program, the PTCA Program Participation Agreement is publicly-available and can be found at [www.ptcaonline.org/PTCA\\_Participation\\_Agreement.pdf](http://www.ptcaonline.org/PTCA_Participation_Agreement.pdf).

# PORCELAIN TILE CERTIFICATION AND THE PORCELAIN TILE CERTIFICATION AGENCY (PTCA)

## ***If a box of tiles has the PTCA certification mark on it, is PTCA stating that those tiles meet ANSI A137.1 water absorption criteria?***

No. PTCA establishes that the program participant understands North American water absorption criteria and is able to meet such.

The quality of the tiles being sold is exclusively controlled by the actual manufacturer.

## ***If a box of tiles has the PTCA certification mark on it, is the program participant stating that those tiles meet all ANSI A137.1 criteria?***

While the program participant may independently claim compliance with all ANSI A137.1 porcelain tile criteria, that is not required by PTCA of program participants.

By participating in the PTCA certification program, the program participant (i.e., the manufacturer and/or seller) is stating that the tiles it produces or sells labeled with the PTCA mark meet the ANSI A137.1 porcelain tile water absorption requirements.

Non-manufacturing participants are further required to obtain a written assurance from the actual manufacturer that it will immediately notify the participant of any changes in the conforming porcelain tiles or any manufacturing variances that may affect the certification.

To further ensure the program's effectiveness, participants have agreed not to use the PTCA mark in any way misleading or confusing to buyers, including displaying the certification mark in a way that would imply non-certified products are certified. Participants also are not allowed to transfer use of the mark to any other person or entity.

As noted above, PTCA certification does not mean the tiles tested met all ANSI A137.1 or ISO 13006 criteria, which would require testing for other physical properties such as dimensions, warpage, breaking strength, etc. That assurance would need to come from the manufacturer or via a third-party lab.

## ***If a box of tiles has the PTCA certification mark on it, can those tiles be used in freeze/thaw and wet environments without concern?***

While the tiles may be perfectly appropriate for such use, the PTCA certification mark does not suggest that. The suitability of any tiles for specific applications requires an analysis of the project conditions by a qualified individual and proper installation. The certification mark does not assure fitness for any particular purpose.



### ***What are the benefits of the PTCA program?***

The PTCA program is designed to directly benefit consumers purchasing porcelain tiles and, indirectly, everyone involved in the supply chain.

Participants benefit by being able to independently confirm to customers that what they are producing or selling is truly porcelain, and by being able to differentiate their products from falsely labeled porcelain products.

Producing porcelain tiles can be a more intensive and costly process than producing non-porcelain tiles, so certification is a good way for manufacturers and sellers to confirm that investment to the market.

For distributors PTCA certification helps differentiate real porcelain tiles from those that are falsely labeled as porcelain.



### ***Who polices PTCA-certified tile?***

The marketplace does. If a question arises about whether a tile sold as PTCA-certified truly meets the water absorption criteria for porcelain tiles, PTCA is authorized to acquire further samples and test such for compliance. The board of PTCA then reviews the available data and relevant actions taken by the program participant to decide whether to withdraw PTCA certification and use of the mark.

Anyone who suspects a non-porcelain tile is being sold as PTCA-certified tile is encouraged to notify PTCA at 630-942-6588 or [info@ptcaonline.org](mailto:info@ptcaonline.org).



## WHAT IS TRUE PORCELAIN?



***The difference between real and false porcelain cannot be detected by eye.... Suppliers of falsely-labeled porcelain are defrauding the consumer and benefitting from the popularity and market value of genuine porcelain.***

Porcelain tile has become increasingly popular over the past decade. The American National Standard Specifications for Ceramic Tile (ANSI A137.1) require tile to have a water absorption of 0.5% or less to be classified as porcelain when tested per ASTM C373, the most stringent test for measuring water absorption.

Manufacturing tile that meets this standard—true porcelain—requires porcelain-grade clays and other unique raw materials, plus precision milling processes and kilns set to extremely high firing temperatures (2100°F to 2500°F). The required raw materials, energy, and manufacturing equipment needed to produce such low porosity, high density tile are why real porcelain is typically more expensive than non-porcelain tile.

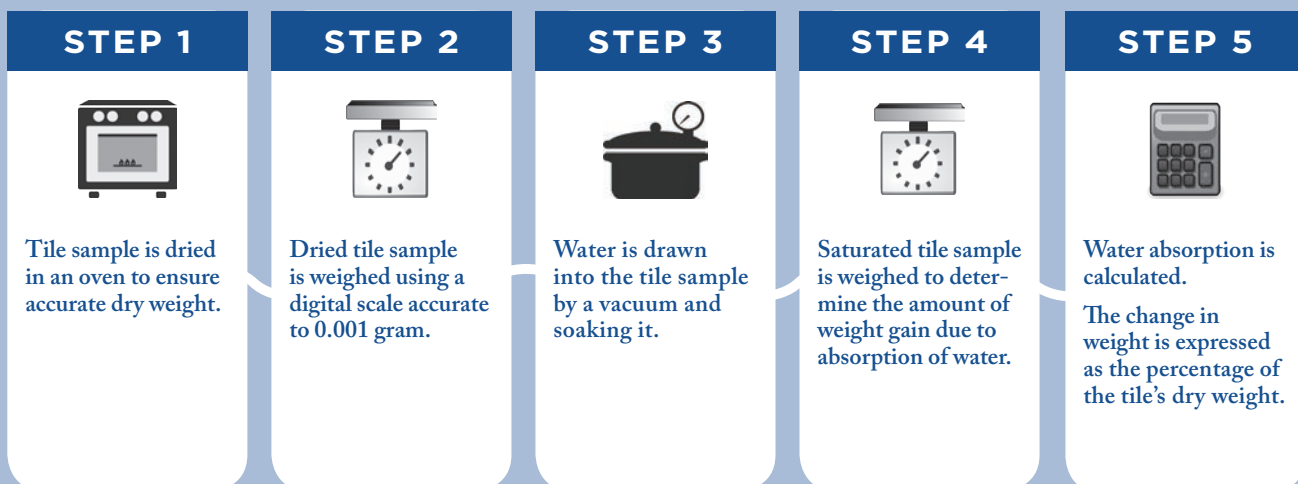
The difference between real and false porcelain cannot be detected by eye—the only way to know is to have a laboratory verify the tile’s water absorption is 0.5% or less. Through its lab, Tile Council has identified 341 series (out of 1,544 total tested) of falsely-labeled “porcelain” tiles with a water absorption well over 0.5%—sometimes as high as 3%.

Suppliers of falsely-labeled porcelain are defrauding the consumer and benefitting from the popularity and market value of genuine porcelain. This is particularly true for imported tile, and, considering that approximately 70 percent of the tile sold in the United States is imported, much of the “porcelain” being sold may be falsely labeled.

## ASTM C373 Water Absorption Test

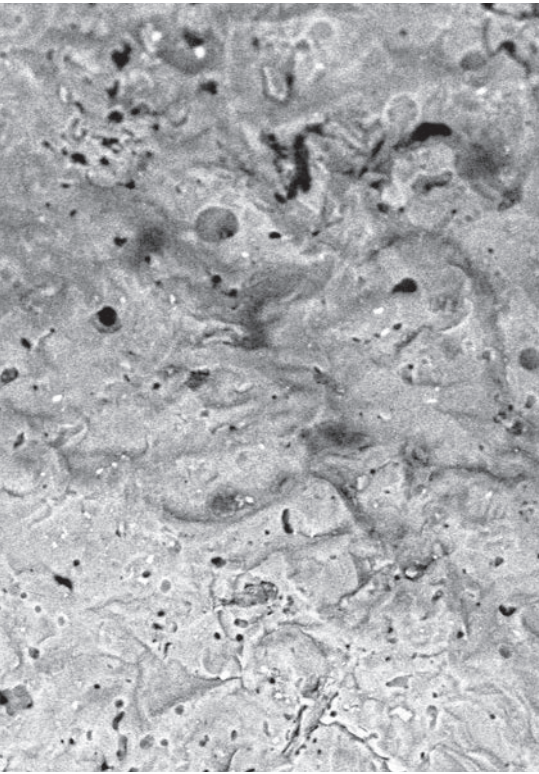
For ceramic tile, water absorption refers to the maximum amount of water that a tile can be made to absorb. In the lab test ASTM C373, water is drawn into the deepest pores of the tile by a strong vacuum.

So, measuring water absorption can also be looked at as measuring available tile porosity—the more water that can be absorbed, the more porous (less dense) the tile.



# BE SURE.

The Certified Porcelain Tile logo means the tile tested met the requirement of 0.5% or less water absorption for porcelain tile of the American National Standards Institute's A137.1 standard.



**PRODUCT PERFORMANCE TESTING LABORATORY**

Visit [www.TCNAtile.com](http://www.TCNAtile.com) for more information

# WHEN QUALITY IS THE BOTTOM LINE MATCH ACT-CERTIFIED INSTALLERS TO THE JOB AT HAND



Tile setting has become a more and more specialized trade, yet it remains largely unregulated when it comes to requirements for installers, whether for training or for proven adherence to best practices and industry standards. The easy entry into tile setting means a contractor may have seasoned, skilled craftworkers or untrained installers with little experience under their belts. And, without an established skills baseline, the contractors that don't invest in installer training and education have a competitive edge, if the only consideration for choosing from a pool of tile contractors is which one has submitted the lowest bid, the norm for the vast majority of commercial work today.

This is the system for awarding tile jobs—too often to unqualified companies—that ACT (Advanced Certifications for Tile Installers) seeks to improve by establishing a skills baseline that allows consumers to compare costs and qualifications.

Launched in 2014, ACT is a program of written and hands-on testing for defined skill sets, like large format tile installation. While other training and certification



*Construction and building design professionals are encouraged to integrate installer qualifications as requirements for bidding contractors, under “quality assurance” sections of their specs.*

*Requiring evidence of program completion or certifications under “submittals” is also recommended to help ensure the specified requirements for installers are met.*

*For ready-to-use boilerplate spec language, see the Installer and Contractor Qualifications Guide in the 2017 TCNA Handbook, or, for easy copy and paste, visit [TCNAtile.com](http://TCNAtile.com).*

programs are available to tile installers, ACT has garnered wide support from the tile industry because it is standards-based and highly demanding.

ACT tests are not show-up-for-a-demonstration-and-get-your-certificate events. A percentage of installers fail, which differentiates ACT as a meaningful certification, not an educational session. The tests have strictly enforced time limits, and installers' hands-on work is evaluated and scored in-person, by approved evaluators only. Upon completion of the hands-on component by the installer, the evaluator literally tears it apart. By prying up tiles and probing fresh mortar beds, ACT evaluators judge what's below the surface, a crucial component of the program, as so much of what is required for a successful tile installation lies below the finished tile work.

ACT tests are administered by the Ceramic Tile Education Foundation (CTEF) and the International Masonry Institute (IMI), which collaborated to develop the program, with support from product manufacturers and industry organizations including the National Tile Contractors Association (NTCA), Tile Contractors Association of America (TCAA), Tile Council of North America (TCNA), and the International Union of Bricklayers and Allied Craftworkers (IUBAC).



#### **ACT Certification: GROUTS**

Specify **ACT GROUTS certification** on every job where cementitious grout, epoxy grout, or modified epoxy emulsion grout will be used.

**Critical Installation Skills Tested:** Proper mixing, installation, and curing of cementitious grout, epoxy grout, and modified epoxy emulsion grout



#### **ACT Certification: LARGE FORMAT TILE /SUBSTRATE PREP**

Specify **ACT LARGE FORMAT TILE certification** when tile larger than 15” long will be installed by a thin-bed method.

**Critical Installation Skills Tested:** Flattening a substrate to receive large tile and installing large tile within industry tolerances for coverage, flatness, and lippage



#### **ACT Certification: MEMBRANES**

Specify **ACT MEMBRANES certification** when a sheet or liquid membrane will be used for waterproofing or crack isolation.

**Critical Installation Skills Tested:** Application of sheet and liquid membranes with emphasis on avoiding installation errors that affect waterproofness



#### **ACT Certification: SHOWERS**

Specify **ACT SHOWERS certification** when designing showers with a mortar bed and tile floor over a shower-pan membrane.

**Critical Installation Skills Tested:** Creating a watertight (leak-proof) shower base that effectively evacuates water



#### **ACT Certification: MUD WALLS**

Specify **ACT MUD WALLS certification** when a mortar bed has been selected as the substrate for tiling walls.

**Critical Installation Skills Tested:** Installing wall mud to ANSI standards, with emphasis on proper materials and precision of finished work (flat, plumb, level, square)



#### **ACT Certification: MUD FLOORS**

Specify **ACT MUD FLOORS certification** when a mortar bed has been selected as the substrate for tiling floors.

**Critical Installation Skills Tested:** Installing floor mud to ANSI standards, with emphasis on proper materials and precision of finished work (flat, level)

# TCNA BULLETIN

## CHOOSING YOUR TILE CONTRACTOR



**TILE.** It's the go-to finish when you're looking for high fashion and high function. But you might not get either if you leave it to just anyone to install. Unlike plumbing, electrical, and structural masonry trades, tile installers and the tile contractors that employ them are not generally required to meet minimum trade craft criteria to be in business.

The difference between trained, experienced installers and inexperienced installers is noticeably reflected in their work, and the difference between a quality contractor and a deficient one is reflected in their service and business operations.

Together, contractor and installer transform your concept into reality. Whether you're a design/build professional selecting tile contractors on a regular basis or a homeowner with a single tile project, it's just not possible to overestimate the importance of finding qualified contractors and installers.

### The Reputable Tile Contractor

- ✓ **Operates a legitimate business**, with responsible business practices and a policy of standing behind their work.
- ✓ **Invests in continuing education** necessary to stay up-to-date on current building codes, regulations, standards, and best practices. On-the-job training is the most popular way to learn a construction trade, but formalized training is a must for ensuring correct installation methods are being taught to and used by installers on your project.
- ✓ **Carries all required business licenses and insurances**, and doesn't push liabilities for property damages or worker injuries onto others.
- ✓ **Does not misclassify workers** to avoid paying into social security, unemployment, workers' compensation, and other employee programs.
- ✓ **Has a traceable business location** so customers can be sure post-installation questions and issues are addressed and resolved.
- ✓ **Has a track record for quality and service:** Good contractors can easily produce references and verifiable documentation of their commitment to quality and service.

## Architects and Specifiers

Include language in job specifications requiring qualified labor and enforce it with the GC. See the TCNA Handbook for a list of industry recognized prequalification programs for installers and contractors such as the CTEF Certified Tile Installer Program, the ACT (Advanced Certifications for Tile Installers) Program, the NTCA 5-Star Contractor Program, and the TCAA Trowel of Excellence Program.

## General Contractors

Deliver a quality tile installation by fulfilling contractor qualification requirements in job specifications. When not included, utilize internally developed qualifications. Require proof of qualifications to be included with all project bids. Thoroughly compare estimates from bidding contractors before awarding contracts. Often, higher estimates reflect better materials and additional necessary components and tasks, like substrate preparation and movement joints.

## Homeowners

Don't hesitate to ask contractors for proof of insurance, their license (where required), and their installation qualifications. Thoroughly interview bidding contractors and check several references. Utilize consumer resources available from your state on the internet and from the Ceramic Tile Education Foundation.



Call CTEF at 864-222-2131 or visit [CeramicTileFoundation.org](http://CeramicTileFoundation.org) for assistance finding or specifying a quality contractor.



“Because tile is a permanent finish, the lowest bid should not be the driving factor, but rather who is the most qualified to perform the scope of the work specified.”

— TCNA Handbook



# Tile comes in thousands of colors. Now your grout does too.

With PERMACOLOR® Select<sup>^</sup> ANYCOLOR™, we can match your grout to over 10,000 colors available in the Benjamin Moore<sup>®†</sup> and Sherwin-Williams<sup>®†</sup> palettes.



Proud sponsor of the Ceramic Tile Education Foundation

- Fast custom ordering — in less than two weeks
- Never needs sealing — equipped with STONETECH® Sealer Technology
- Also available in 80 stocked colors, including all 40 LATICRETE® colors and the top selling competitor colors



Globally Proven  
Construction Solutions

<sup>^</sup>See Data Sheet 230.99 for complete warranty information.  
<sup>†</sup>United States Patent No. 6,784,229 B2 (and other Patents) \*\*When mixed with PERMACOLOR® Select Base.  
<sup>‡</sup>Sherwin-Williams and Benjamin Moore have no involvement with this program.  
A-83551117 ©2017 LATICRETE International, Inc. All trademarks shown are the intellectual properties of their respective owners.

[www.laticrete.com](http://www.laticrete.com) | 1.800.243.4788

## Systems with the Green Squared advantage

### MAPEI offers the first and only TCNA Green Squared Certified tile installation systems

Working on a sustainable project? Use one of MAPEI's SCS Green Squared Certified (ANSI A138.1) installation systems and get the green advantage. Green Squared® certification products can now qualify under the LEED v4 pilot credit "Certified Multi-Attribute Products and Materials." Additionally, these products also qualify for U.S. Environmental Protection Agency (EPA) Recommendations of Specifications, Standards and Ecolabels for government projects.

Green Squared certification (SCS third-party certified) includes the initial and followup reviews of MAPEI's product manufacturing facilities — responsible raw-material sourcing, the production process and a full life-cycle assessment of the products.

MAPEI offers several SCS Green Squared Certified mortars and grouts that combine with Green Squared Certified tile to create complete installation systems. In fact, MAPEI Flexcolor™ 3D grout is certified at the highest Green Squared level thanks to its 70% pre-consumer recycled content:

**MAPEI Ultralite™ Mortar, MAPEI Ultralite Mortar Pro, MAPEI Ultralite S2 mortar, MAPEI Ultralite S1 Quick mortar, Ultracolor® Plus FA grout and MAPEI Flexcolor 3D grout.**



Contact your sales distributor or visit [www.mapei.com](http://www.mapei.com) for details.

Proud sponsor of the Ceramic Tile Education Foundation





## TILE & STONE INSTALLATION SYSTEMS

Proud sponsor  
of the Ceramic  
Tile Education  
Foundation

**THINSETS**

**WATERPROOFING**



**GROUTS**  
merkrete.com  
PAREXUSA

**UNDERLAYMENTS**

**CRACK ISOLATION**



## Educational Opportunities

Dedication. Innovation. Education.



**Workshops • AIA & IDCEC Seminars • e-Learning**

[www.schluter.com/education](http://www.schluter.com/education)

Proud sponsor of the Ceramic Tile Education Foundation

## ***Tile Heritage Foundation: Guardian of American Tile History***



*Tile Heritage Foundation was established in 1987 as a member supported, not-for-profit organization whose sole purpose is to protect and preserve the history of the American Tile Industry.*

*Tile Heritage is dedicated to promoting an awareness and appreciation of ceramic surfaces in the United States.*

The Foundation is a repository, an archive, which embraces all aspects of the industry from its inception in the 1870s through to the present time, validating its significance for posterity.

*The Foundation's archives include an estimated 40,000 documents and an equal number of images, both historic and contemporary. Manufacturing, distribution and installation histories are represented.*

The body of information on hand, coupled with expertise resulting from over 70 years of combined experience in the field and access to a network of experts worldwide, provides assurance of both helpful and accurate answers to questions and solutions to problems.



Above, a "bottle" kiln at the American Encaustic Tiling Co. with tiles being loaded into saggars for firing. At left, a fanciful, dust-pressed American Encaustic frieze for the center of a fireplace surround, circa 1890s. Photos from the Tile Heritage Digital Library.

## ***Manufacturing represents the cornerstone of the tile industry.***



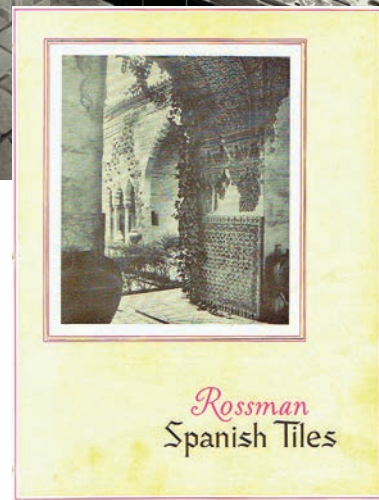
The American Encaustic Tiling Company in Zanesville, Ohio, was the largest tile manufacturer in the country by 1930. Its first commission in 1876 was to produce encaustic floor tile for the Muskingham County Courthouse in Zanesville (below, right).

*The primary goal of Tile Heritage is to assist in the preservation of ceramics surfaces, which includes its legendary history, significant installations, as well as the objects themselves. By providing pertinent information, unbiased consultation and specific recommendations when needed, the Foundation serves both the industry and the public at large as no other agency can.*



At left, an undated picture of the office staff at the American Encaustic Tiling Company in Zanesville. From the women's attire and hairstyles, a likely date would be mid-1920s. Photos from the Tile Heritage Digital Library.

***Marketing, sales, and distribution have served as an essential realm within the tile industry since tiles were first made to sell.***



During the last half of the 1920s a number of companies hosted exotic showrooms in major urban centers with sales supported by sophisticated printed materials in full color. Rossman Corporation was one of these with representation in New York City, Chicago and San Francisco featuring both imported and domestic tiles.



The offices of E.L. Bradley in San Francisco, which represented Rossman, were rather dark and austere by today's standards. Lots of handwritten letters, typewriting and teletype options, but none of the convenient forms of communication we have today.

***"Tile Heritage speaks for all of us interested in the world of tiles."***

**Marie Glasse Tapp, Founder  
Tile Restoration Center**

Photos from Tile Heritage Archives, E.L. Bradley Collection. Gift of Rodger Dunham.

***Honoring the work and artistry of tile installers through the archiving of their accomplishments validates tiles for posterity.***

Henry Krier (1886-1967), a legend in his own right in Southern California during the '20s and '30s, learned his trade in Germany, emigrated to the United States early in the 20th century, establishing himself as a mason and then as a productive tile contractor.



Henry Krier, posing proudly in front of his home/office, c. 1938. Tile Heritage Archives, Krier Collection. Gift of Rick Baratta.



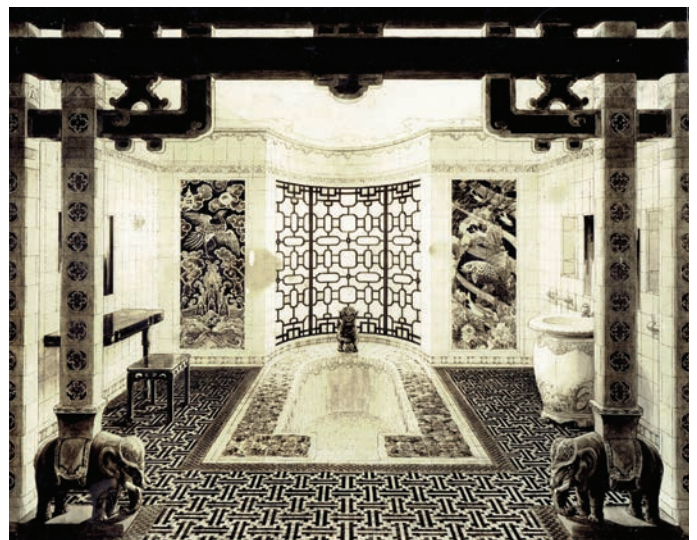
“The Legacy of Henry Krier” by Lynn Downey, was published in “Flash Point,” vol. 2, no. 3 by the Tile Heritage Foundation in 1989.

***“Each time I kneel, it’ll cost you money!” HK***

*With the development of the vision for Tile Heritage an important aspect has always been education through integration—the bringing together of all those with a vital interest in ceramic surfaces.*

Tiled bath set by Henry Krier at the castle of Evangelist Aimee Semple McPherson at Lake Elsinore, California, 1929.

Photo by Albert E. Cawood. Tile Heritage Archives, Krier Collection. Gift of Rick Baratta.



## ***Identification encourages restoration of historic tile installations.***

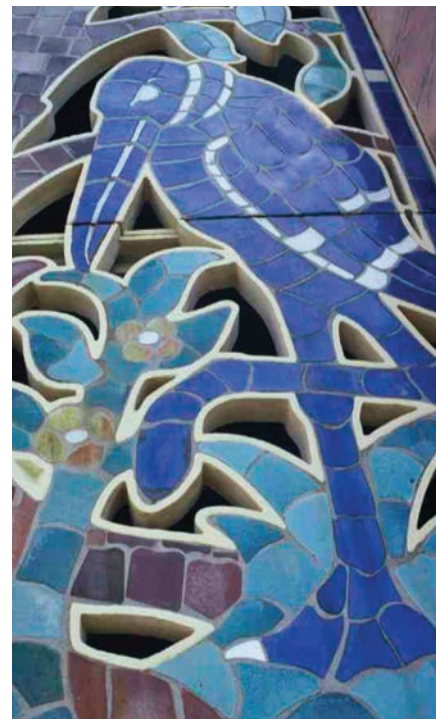


Tiles by Handcraft Tile Co. of Milpitas, California adorn this 1937 Spanish Colonial residence in San Jose.

***TILE INSTALLATION IDENTIFICATION.*** The Tile Heritage Foundation offers tile identification services to the public at no charge. Simply email [foundation@tileheritage.org](mailto:foundation@tileheritage.org) with clear, low res images of individual tiles or tile installations along with whatever relevant information is readily available: site (city/state), size, date (approximate), architect/designer if known. If the experts at Tile Heritage are not able to identify the work, your email will be forwarded to others who are likely to know.

Tile Heritage has been involved with Bok Tower Gardens in Lake Wales, Florida since 1994 when we were contacted to verify the identity of the tile installations at Pinewood, a Spanish Colonial house built in 1931. Currently, the Gardens are engaged in an extensive restoration of the exterior of Bok Tower itself, the 205-foot, 60-bell carillon decorated with a series of colorful tile grilles that provide the openings for the bell chamber. Sadly, the grilles, designed and fabricated in 1929 by the Enfield Pottery and Tile Works, have been compromised by an acid wash applied during a previous cleaning of the tower. The situation has now been addressed by industry experts.

***Tile Heritage involves more than the identification and protection of tiles.*** The Foundation represents the need to preserve a perception of ourselves. The archival records held by THF are of national importance—they tell our story! We are all part of this heritage!



## ***Preservation of significant installations is of paramount importance.***



Port of Long Beach Administration Building. Photo courtesy Long Beach Press-Telegram.

Adorning the front of the vacated Port Administration Building in Long Beach, California is a historic ceramic tile mural produced in 1959 at Gladding, McBean under the direction of Sheridan Stanton and painted by Paul Marciel Souza, a well-known Southern California artist. This 74-foot mural is scheduled for demolition in 2018 unless the tiles can be removed and relocated. Long Beach Heritage has been communicating with the Port of Long Beach for several years encouraging the relocation of the mural. At the time of this writing, sample tiles have been safely removed and a protocol for the removal, labeling, packing and storing of the tiles is being prepared for potential bidders. Long Beach Heritage will soon spearhead a fundraising drive to fund the removal process.

*Tile Heritage documents the location and producers of contemporary installations as well. Their future is often as vulnerable as historic works and the need to preserve them in situ equally important.*



"Water Through Time," is the creation of Susan Dunis and Sienna Dunis Ginn of Dunis Studios in Wimberley, Texas. The 15 x 5-foot mural was mounted on the Briscoe Western Art Museum in San Antonio in 2014. Photo courtesy of Susan Frost.

## ***Educational outreach has always been fundamental to the mission of the Tile Heritage Foundation.***

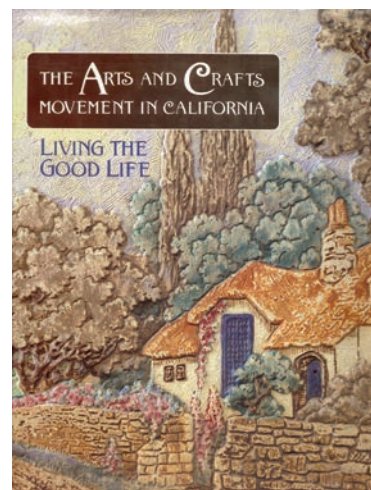


“California Tile,” an exhibition of historic tiles, opened at the San Francisco Airport Museum in 2004, where it remained for over nine months. Tile Heritage supplied tiles from its collection and provided all of the tile graphics from its slide library.

Over the past 25 years a number of prestigious institutions have partnered with Tile Heritage or borrowed historic materials for their periodic exhibitions. The Oakland Museum was the first for “The Arts and Crafts Movement in California: Living the Good Life” in 1993, introducing a variety of historic California tiles and publishing a 328-page hard cover catalog that featured a decorative tile cover and included a chapter devoted to these tiles.

*In 2004 the California Heritage Museum in Santa Monica sponsored a 2-volume publication, “California Tile: The Golden Era 1910-1940” to coincide with its tile exhibition of the same name. Joseph Taylor of Tile Heritage served as the book’s editor.*

That same year the San Francisco Airport Museum presented “California Tile” in its North (United) Terminal, an extraordinary exhibition of both historic tiles and tile graphics (above) provided by the Tile Heritage slide library. The display was seen by millions of travelers over its nine month duration. Currently, the museum is hosting an Arts and Crafts exhibition (2017-18), for which Tile Heritage has provided a selection of historic tiles.



A Claycraft Potteries tile was chosen for the cover of this exhibition catalog.

***“Educate” is what we do best!***

***To be most effective, education necessitates direct communication.***



Screening raw clay dug from the mountains near La Madera, New Mexico to make tiles from scratch, a 2-day workshop at “Spirit in Clay,” in the fall of 2000.

***“Communicate” is what we do!***

Email provides our principal means of communication today both from the office and when we’re “on the road,” responding to the daily barrage of inquiries from throughout the United States



As a guest of Tile Council of North America at Coverings, Tile Heritage engages with industry people concerning historic installations as well as preservation and restoration issues. Las Vegas 2011.

Between 1991 and 2005 Tile Heritage presented annual symposiums in different cities around the United States, partnering with local organizations, to bring like minds together and to raise a community’s consciousness about the significance of local tile installations within these diverse venues. The program, most often 4-5 days, included workshops, tours and lectures on both historic and contemporary tile-related subjects. Useful tile tour maps were created as a lasting memento.



Tile Heritage tour discovers encaustic tiles at Sacred Heart Music Center in Duluth, Minnesota in 2005.

Thirty years ago one would be hard pressed to find a book on American tiles; today there are scores to choose from, covering both historic and contemporary ceramic surfaces. Tile Heritage published 42 issues of “Flash Point” (ISSN 1078-5647) between 1988 and 2003; 17 issues of *Tile Heritage: A Review of American Tile History* (ISSN 1978- 5655) have been published as well. Since 2004 “E-News” and “Shards & Snippets” serve as the Foundation’s principal means of outreach; all back issues are available online.

***Please visit: [www.tileheritage.org](http://www.tileheritage.org).***

***The Foundation is now engaged in maintaining the industry's history as a living archive through a publicly accessible finding-aid Index.***



***“Where art and architecture meld and merge in the world of tile, Tile Heritage Foundation is there, preserving and documenting to educate the future of our industry.”***

**Eric Astrachan  
Tile Council of North America**

The tile collection alone contains over 4000 different glazed and decorative samples from scores of American companies dating to the 19th century. All of the tiles in the collection have been donated; Tile Heritage does not buy or sell historic material.

Tile Heritage Foundation's archived tile collections, available by appointment.

***The present time is of critical importance as we strive to enhance the accessibility of the Tile Heritage archives and collections for industry-wide and public use. Our goal is to keep the archives “alive” with our ongoing development of the \*online Finding-aid Index. It is imperative that this work be completed. Expanding our industry partnership is essential to its success.***

The Tile Heritage Library contains hundreds of books and over 40,000 documents. The collections include over 700 original company catalogs and more than 40 tile-related periodicals dating back to the 1880s.

***“Tile Heritage represents the ‘soul’ of the industry in America.”***

**Donato Grosser  
D. Grosser & Associates, Ltd.**



Tile Heritage Foundation's archived periodical collections.

***\*A Feather in our Cap! Tile Heritage Archives has been accepted as a contributor by the Online Archive of California (OAC), providing access to the Tile Heritage Archives Index nationwide and beyond!***

# ***A broad funding base is essential for the long-term sustainability of Tile Heritage. Membership and sponsorship have always provided the core of the Foundation’s financial stability.***

For the past 30 plus years Tile Heritage has received substantial support from sponsors in the tile industry. Diverse membership within and beyond the industry has also played a major role. The Foundation has benefited from substantial grant support as well.



Industry Sponsors play a major role in providing sustainability for the Tile Heritage Foundation.

THF engages in creative, public-centric fundraisers such as tile festivals, tile tours, lectures, auctions and other events, often creating venues that showcase contemporary tile making.



Tile Festival at the Moravian Pottery and Tile Works, Doylestown, PA.

## **TEAM UP WITH TILE HERITAGE!**

Email: [foundation@tileheritage.org](mailto:foundation@tileheritage.org)

[www.tileheritage.org](http://www.tileheritage.org)

Tile Council of North America (TCNA) has embraced Tile Heritage for many years recognizing the importance of maintaining the historic tile industry archives and collections.

TCNA advocacy and inclusiveness has contributed greatly to the Foundation’s validation and visibility.

***“It is very important that we, as an industry, promote an appreciation of tiles—to know what came before. Individually we are not always able to do that, but by supporting the Tile Heritage Foundation we can preserve the history. As an industry we should support that work.”***

**Svend Hovmand, Crossville Ceramics**

***We invite you to partner with the Tile Heritage Foundation by becoming an Industry Sponsor—protecting tile history today, validating that history for tomorrow!***

***An Invitation from Tile Heritage Foundation:  
Participate in A MONUMENTAL HAND-PRINT MURAL  
A Donor Wall for Posterity***



***AN INSPIRATION TO PUT OUR HANDS IN CLAY TOGETHER!***

***An INVITATION to the Global Tile Industry to have a HAND-PRINT in HISTORY!  
Partner in a FUN & INSPIRING OPPORTUNITY involving the entire tile community!***

***CONCEPT***

**The concept is to create a ‘monumental tile mural’** honoring everyone with his or her ‘hand’ in the industry. Individual & corporate participants’ handprints, logos & names will be part of a historic tile installation for posterity. Over a 12 to 15 month period we are expecting 5,000 tiles from participants by engaging people active today throughout the tile industry—inviting all to press their hands into a wet clay tile and become a part of the mural! The final installation will be at TCNA headquarters in Anderson, SC.

Introduced at Total Solutions Plus, November 2017 in Washington D.C., the initial large-scale hand printing in clay workshop is open to all in the industry at COVERINGS 2018, Atlanta GA. More participation workshops in the months ahead are planned.

***SPONSORSHIP IS WELCOME!***

## ***Sponsorship Opportunity Details***



Monumental Mural hand-prints on fired tiles from Clay Squared to Infinity staff, Minneapolis, MN

### ***Here's How YOU Can Participate Providing your "Hand" to the Monumental Mural Project!***

Everyone associated with the tile industry, globally, is welcome to contribute a tile: manufacturers, artists and artisans; contractors, setters and apprentices; distributors, dealers and showroom personnel; suppliers of clay, glazes, setting and maintenance materials, machinery and tools; industry organizations as well as architects, designers, decorators and general contractors.

**Sponsorship** supports the production and installation of the Monumental Mural.

For details: <http://www.tileheritage.org/pdfs/Donor-Wall-Contribute.pdf>

**Participation Station Workshops** have been established at multiple locations providing an evening or weekend venue for pressing your hands in clay. Tile Heritage offers detailed guidelines to follow for fun and successful events. Go to: <http://www.tileheritage.org/pdfs/Hand-print-Participation-Station-details.pdf>

**Individual & Studio Participation:** Tile Heritage provides detailed specifications and instructions to assist you in making your own "Hand-Print" tile! See: <http://www.tileheritage.org/pdfs/Hand-print-tile-details.pdf>

### ***Our Goal: 5000 "Hands in Clay"! Every "Hand" is Welcome!***

Thank you for embracing this historic project connecting all of us with a "hand" in the tile industry today! Participating in this mural supports archiving the industry's history at the Tile Heritage Foundation.

Questions: Email Tile Heritage: [foundation@tileheritage.org](mailto:foundation@tileheritage.org)

Tile Heritage Foundation Staff & Board

[www.tileheritage.org](http://www.tileheritage.org)

# THE POWER IS IN OUR PARTNERSHIP

Building the Future. Together.



Proud sponsor of the Ceramic Tile Education Foundation

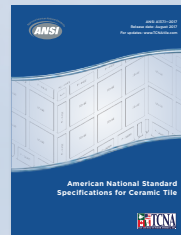
©Copyright 2016 H.B. Fuller Construction Products Inc.  
TEC® and the TEC® logo are trademarks of H.B. Fuller Construction Products Inc.

START  
with  
STANDARDS

ENDURING DESIGNS  
NEED SOLID FOUNDATIONS

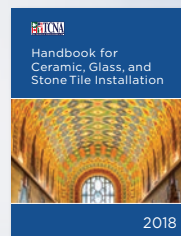
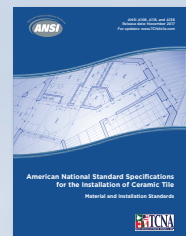


Purchase current print or digital  
editions at [www.TCNAtile.com](http://www.TCNAtile.com)



*product performance—  
ceramic and glass tile*  
**ANSI A137**

*installation and workmanship*  
**ANSI A108**  
*product performance—mortars,  
grouts, and membranes*  
**ANSI A118**



*installation  
systems—ceramic,  
glass, and stone tile*  
**TCNA HANDBOOK**

# A BETTER WAY TO TILE!



ARDEX prides itself on providing tile & stone installation systems with the highest levels of innovation and performance in North America and throughout world.

We deliver system solutions for tile and stone installation professionals with real, tangible and measurable benefits:

- **Easier to use**
- **More reliable**
- **Time savings**
- **Cost effective**
- **Demanding environments**
- **Unmatched support**

Like the outstanding group of organizations that train and promote our industry, we share an unwavering commitment to installation excellence and a better way to install tile!

**ARDEX is a proud member and supporter of:**



[www.ardexamericas.com](http://www.ardexamericas.com)

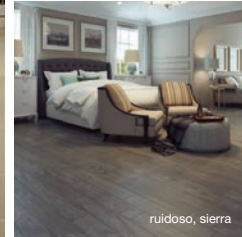
## THE CERAMIC THAT THINKS IT'S PORCELAIN.



walker, rackhouse



crecident, villa cora



ruidoso, sierra



INDOOR



OUTDOOR



COMMERCIAL

Durabody is your stain, frost and worry-proof tile. Made to last a lifetime, while looking like the day they were installed. That's a lifetime of muddy paws, stomping children, cold snaps and everything else life can throw at it. The Durabody ceramic secret? Our tiles are fired at the same temperature and glazed just like porcelain. That means you get virtually the same frost resistance and durability as porcelain, at a fraction of the cost. Check out our Durabody ceramic tiles at [interceramicusa.com](http://interceramicusa.com).

Durabody Ceramic. Crafted for Life.

**Interceramic®**  
CRAFTED FOR LIFE

Proud sponsor of the Ceramic Tile Education Foundation

[interceramicusa.com](http://interceramicusa.com)

## HardieBacker® Cement Board

**MADE BETTER.  
INSTALLS BETTER.  
PERFORMS BETTER.™**

Learn more at [HardieBacker.com](http://HardieBacker.com)



**JamesHardie**

Underlayment

Proud Sponsor of the Ceramic Tile Education Foundation

## At American Wonder Porcelain™, it's more than tile.

It's a commitment to American design, American innovation, and American manufacturing. Proudly creating tile for the U.S. market in Lebanon, Tennessee.



**AMERICAN WONDER PORCELAIN™**

Proud to be a Platinum supporter of the Ceramic Tile Education Foundation (CTEF).



2018

# CTEF FINANCIAL SPONSORS

## ELITE SPONSORS



## SIGNATURE SPONSORS



## PLATINUM SPONSORS



## GOLD SPONSORS



## SILVER SPONSORS



## BRONZE SPONSORS



# NTCA Five-Star Contractors and TCAA Trowel of Excellence Contractors

*are uniquely qualified to  
provide the craftsmanship  
and service you deserve.*



The Tile Council of North America Handbook strongly recommends using installers who have demonstrated their commitment to their craft.

Because tile is a permanent finish, the lowest bid should not be the driving factor, but rather who is the most qualified to perform the scope of the work specified.

TCAA Trowel of Excellence and NTCA Five Star Contractors have a proven track record of success for both residential and commercial installations. These companies have demonstrated their commitment to professionalism by passing rigorous review of their training, management and safety practices and enjoy strong support from peers, customers and suppliers.

Contact the NTCA and TCAA for qualified Five Star and Trowel of Excellence contractors for your upcoming project.



# TILE HAS MANY FACES.

Beauty like this doesn't have to be fleeting ... when your clients choose tile, that is. A properly installed ceramic tile floor will outperform and outlast any other floor covering product created for the same application, even outdoors in coastal conditions. In fact, neither mold, mildew, bacteria, nor the side effects of Man's Best Friend will leave tile in ruins: its hard surfaces stand up to the test of time. Smart and beautiful—that's why tile.



WhyTile.com

**NOTICE OF DISCLAIMER AND LIMITATION OF LIABILITY:** This publication and all of the information it contains are provided 'as is' without warranty of any kind, whether express or implied. All implied warranties, including, without limitation, implied warranties of merchantability, fitness for a particular purpose and non-infringement, are hereby expressly disclaimed.

Publisher has not performed any independent analysis in connection with any of the information contained herein, and expressly disclaims any obligation to obtain and include information other than that presented herein. This information does not purport to address safety issues or applicable regulatory requirements associated with its use. It is the responsibility of the user of this information to review any applicable codes and other regulations and any site specific conditions in connection with the use of this information. Publisher expressly makes no representations or warranties regarding compliance with any applicable statute, rule or regulation.

Under no circumstances will Publisher be liable to any person or business entity for any damages, including without limitation any and all direct, indirect, special, incidental, consequential, or exemplary damages, resulting, in whole or in part, from any use of, reference to, or reliance upon this publication, even if advised of the possibility of such damages.

The foregoing limitation of liability is a fundamental element of the use of this information and the information would not be offered by the Publisher without such limitation.

Release date: April 2018



Copyright © 2018. Tile Council of North America, Incorporated. All Rights Reserved.

100 Clemson Research Blvd. Anderson, SC 29625 | 864.646.8453 | [www.TCNAtile.com](http://www.TCNAtile.com)